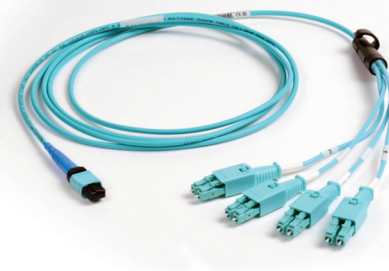
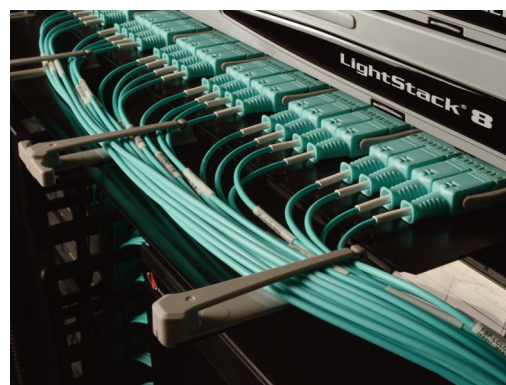


Top 10 Reasons to use Siemon Plug and Play Fiber Solutions

1. Siemon Plug-and-Play Fiber Solutions include high-density and ultra high-density Base 12 and Base 8 systems, with Base 8 systems offering the most efficient, cost-effective support for current 40 and 100 Gigabit fiber applications, as well as future 200 and 400 Gigabit fiber applications, that are based on 8 optical fibers with 4 fibers transmitting and 4 fibers receiving at either 10, 25, 50 or 100 Gb/s.
2. Siemon Plug-and-Play Fiber Solutions are independently third-party tested and confirmed by Expor Labs in accordance with the latest IEC 1280-4-1 Edition 2 and TIA/EIA-455-171A standards for 40 and 100 Gigabit readiness. They exhibit industry-leading performance margins up to 60%, providing critical headroom to address stringent 40 and 100 Gigabit application loss budgets in installed systems.
3. Siemon factory-terminated and tested Plug-and-Play Fiber Solutions can be deployed up to 90% faster than traditional field termination methods. They are simple, efficient and green, eliminating separate field termination connectors, termination kits, consumables and onsite scrap or waste, as well as the need for expensive fiber termination skill sets.
4. Siemon Plug-and-Play assemblies with RazorCore™ fiber cable offer an optimized cable diameter for reduced pathway fill and improved air flow. Siemon's 8- and 12-fiber MTP jumpers with RazorCore™ cable offer an overall cable diameter of just 2mm for reduced pathway fill, improved airflow and enhanced accessibility in high density patching areas.
5. Siemon Plug-and-Play Fiber Solutions include the innovative LC BladePatch® jumper with its revolutionary push-pull latch activation for easy access and removal in tight-fitting areas and a latch-only rotation that allows for quick and easy polarity changes in the field without damaging the connector or fiber and clearly indicating when a polarity change has been made.
6. Siemon Plug-and-Play Fiber Solutions include the LightStack® and LightStack® 8 ultra high density systems with easy-to-install low loss modules and adapters and modern 1U and 4U enclosures able to support up to 144 LC fibers and 864 MTP fibers within 1U or 576 LC fibers and 3456 MTP fibers within 4U. LightStack's innovative features also offer superior accessibility, cable management and fiber protection.
7. Siemon Plug-and-Play Fiber Solutions feature a modular design that offers seamless migration from 10 to 40/100 Gigabit applications and beyond. 10 Gigabit LC-to-MTP modules can be easily swapped out for 40/100 Gigabit MTP adapters and LC jumpers replaced with 40/100 Gigabit equipment cords.
8. Siemon Plug-and-Play Fiber Solutions are fully tested using Encircled Flux compliant testing, which reduces test variability by up to 75% versus previous test methods, ensuring more accurate results and eliminating the potential for false pass results that can degrade overall network performance. Comprehensive bidirectional test data is included with each plug and play assembly for Insertion Loss and Return Loss at both 850 and 1300nm wavelengths.
9. Siemon performs automated end-face inspection of all fiber interfaces to IEC 61300-3-30 Ed 1.0 to limit contaminants and surface defects that can significantly degrade system performance. All Siemon MTP connectors have passed IEC 61300-3-30 Ed 1.0 testing for performance-critical fiber end-face geometry.
10. All Siemon plug-and-play modules utilize high-quality ceramic alignment sleeves within LC adapters to deliver tighter tolerances and greater durability than traditional phosphor bronze sleeves for improved fiber-to-fiber mating alignment and wear resistance.



www.siemon.com/lighthouse

